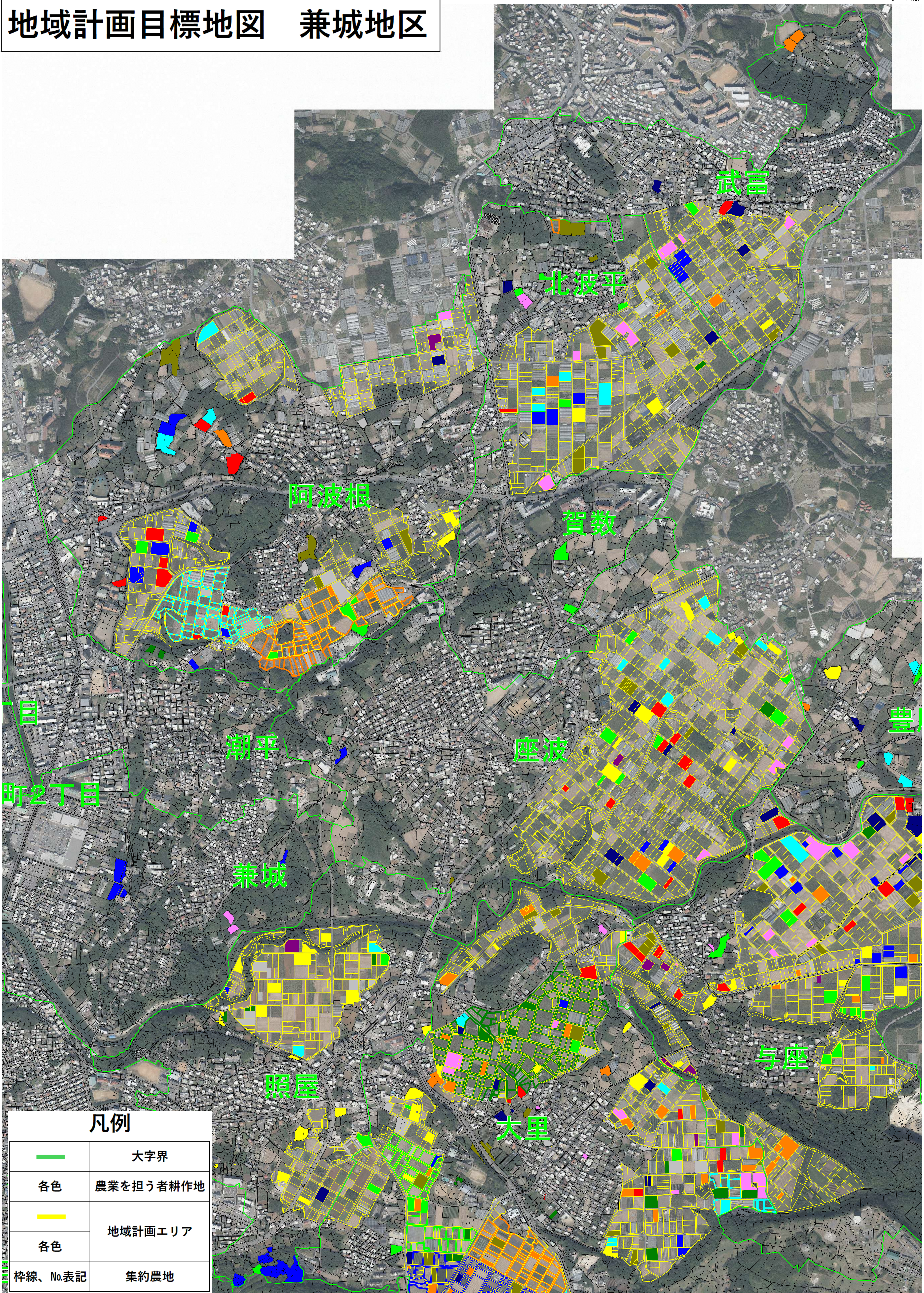


地域計画目標地図 兼城地区



凡例

	大字界
	農業を担う者耕作地
	地域計画エリア
	地域計画エリア
	集約農地

No. 309, No. 311, No. 312, No. 313, No. 314, No. 315, No. 316, No. 317, No. 318, No. 319, No. 320, No. 321, No. 322, No. 323, No. 324, No. 325, No. 326, No. 327, No. 328, No. 329, No. 330, No. 331, No. 332, No. 333, No. 334, No. 335, No. 336, No. 337, No. 338, No. 339, No. 340, No. 341, No. 342, No. 343, No. 344, No. 345, No. 346, No. 347, No. 348, No. 349, No. 350, No. 351, No. 352, No. 353, No. 354, No. 355, No. 356, No. 357, No. 358, No. 359, No. 360, No. 361, No. 362, No. 363, No. 364, No. 365, No. 366, No. 367, No. 368, No. 369, No. 370, No. 371, No. 372, No. 373, No. 374, No. 375, No. 376, No. 377, No. 378, No. 379, No. 380, No. 381, No. 382, No. 383, No. 384, No. 385, No. 386, No. 387, No. 388, No. 389, No. 390, No. 391, No. 392, No. 393, No. 394, No. 395, No. 396, No. 397, No. 398, No. 399, No. 400, No. 401, No. 402, No. 403, No. 404, No. 405, No. 406, No. 407, No. 408, No. 409, No. 410, No. 411, No. 412, No. 413, No. 414, No. 415, No. 416, No. 417, No. 418, No. 419, No. 420, No. 421, No. 422, No. 423, No. 424, No. 425, No. 426, No. 427, No. 428, No. 429, No. 430, No. 431, No. 432, No. 433, No. 434, No. 435, No. 436, No. 437, No. 438, No. 439, No. 440, No. 441, No. 442, No. 443, No. 444, No. 445, No. 446, No. 447, No. 448, No. 449, No. 450, No. 451, No. 452, No. 453, No. 454, No. 455, No. 456, No. 457, No. 458, No. 459, No. 460, No. 461, No. 462, No. 463, No. 464, No. 465, No. 466, No. 467, No. 468, No. 469, No. 470, No. 471, No. 472, No. 473, No. 474, No. 475, No. 476, No. 477, No. 478, No. 479, No. 480, No. 481, No. 482, No. 483, No. 484, No. 485, No. 486, No. 487, No. 488, No. 489, No. 490, No. 491, No. 492, No. 493, No. 494, No. 495, No. 496, No. 497, No. 498, No. 499, No. 500